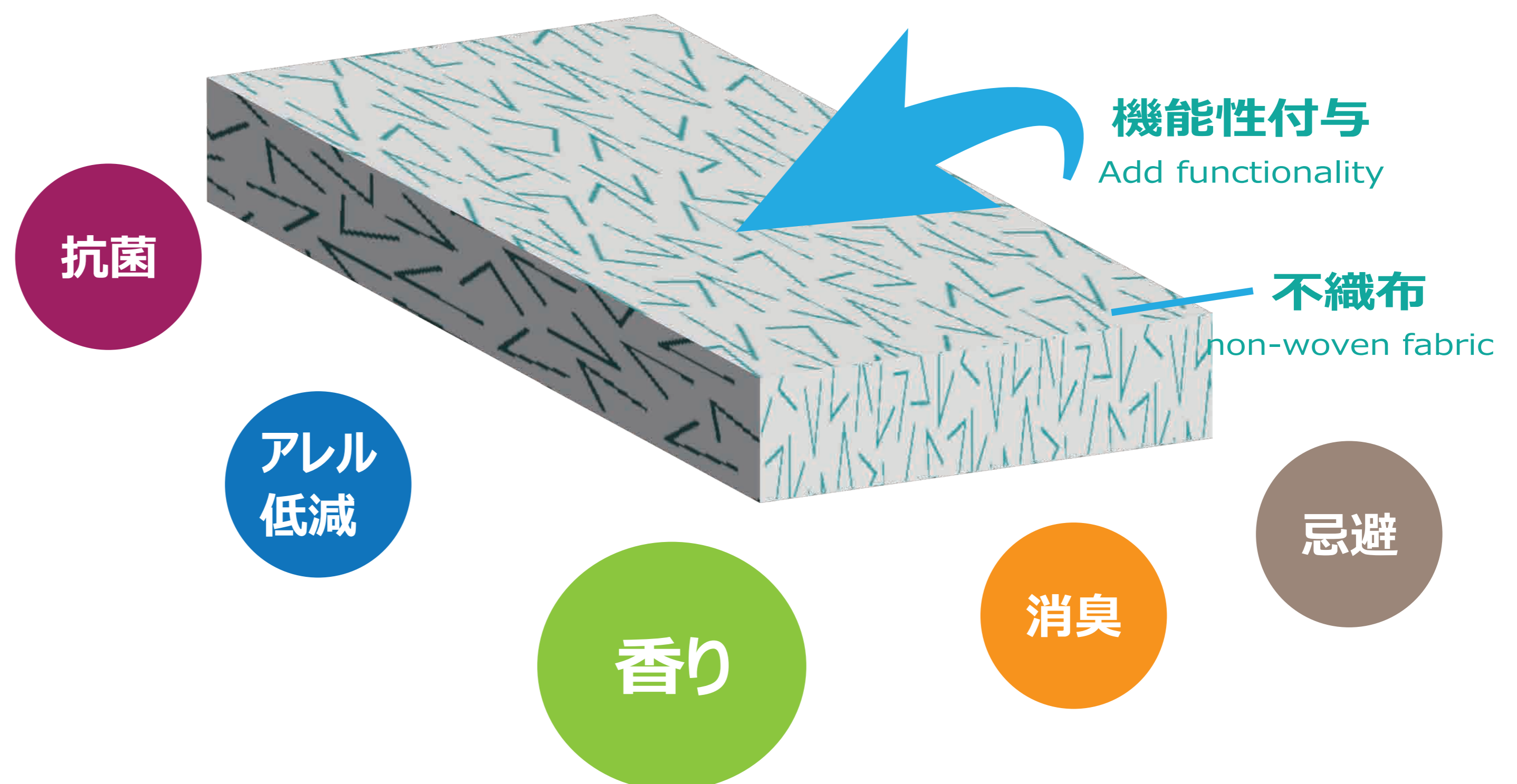
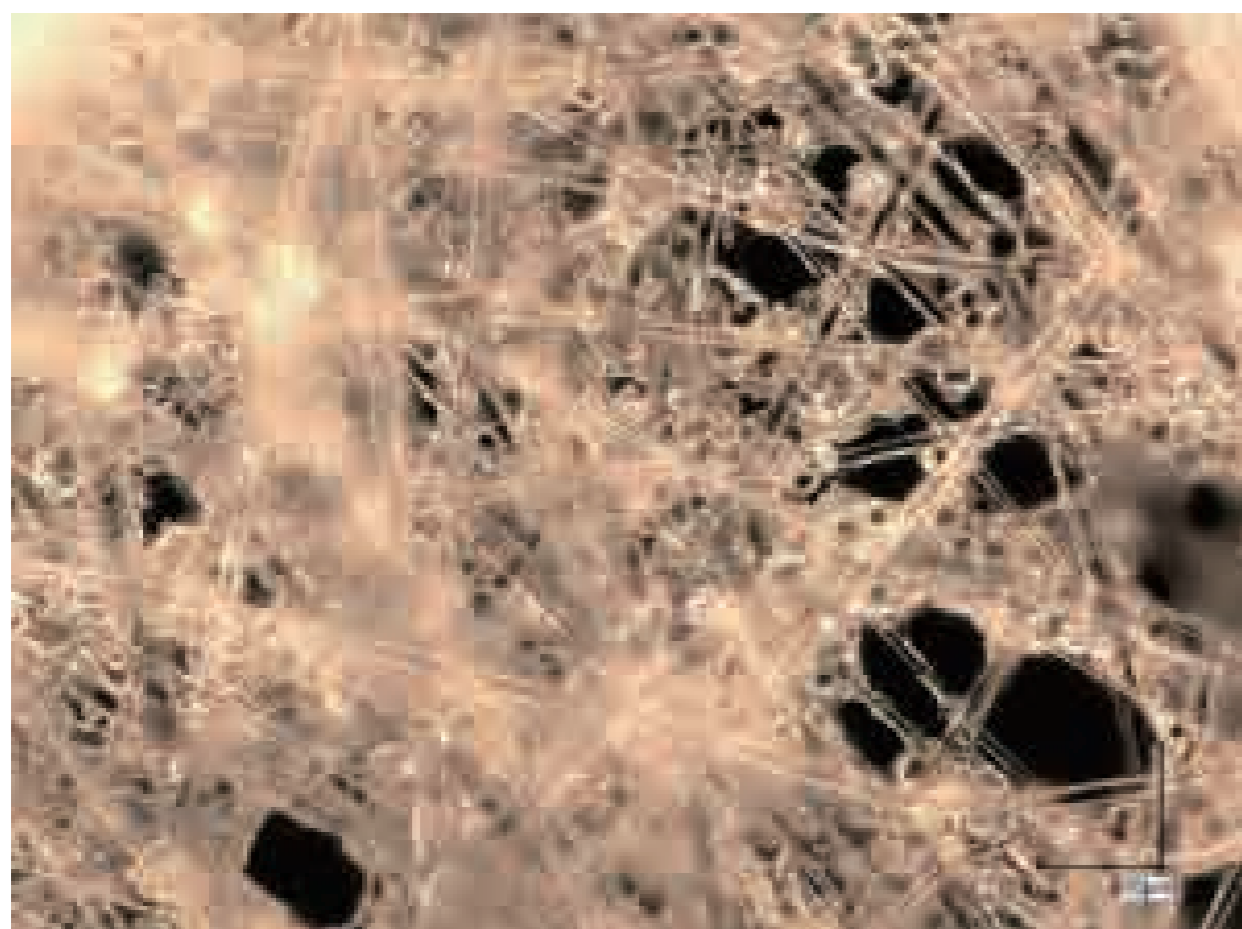




## <開発品> 香りシート（不織布、フィルム） Scented sheet

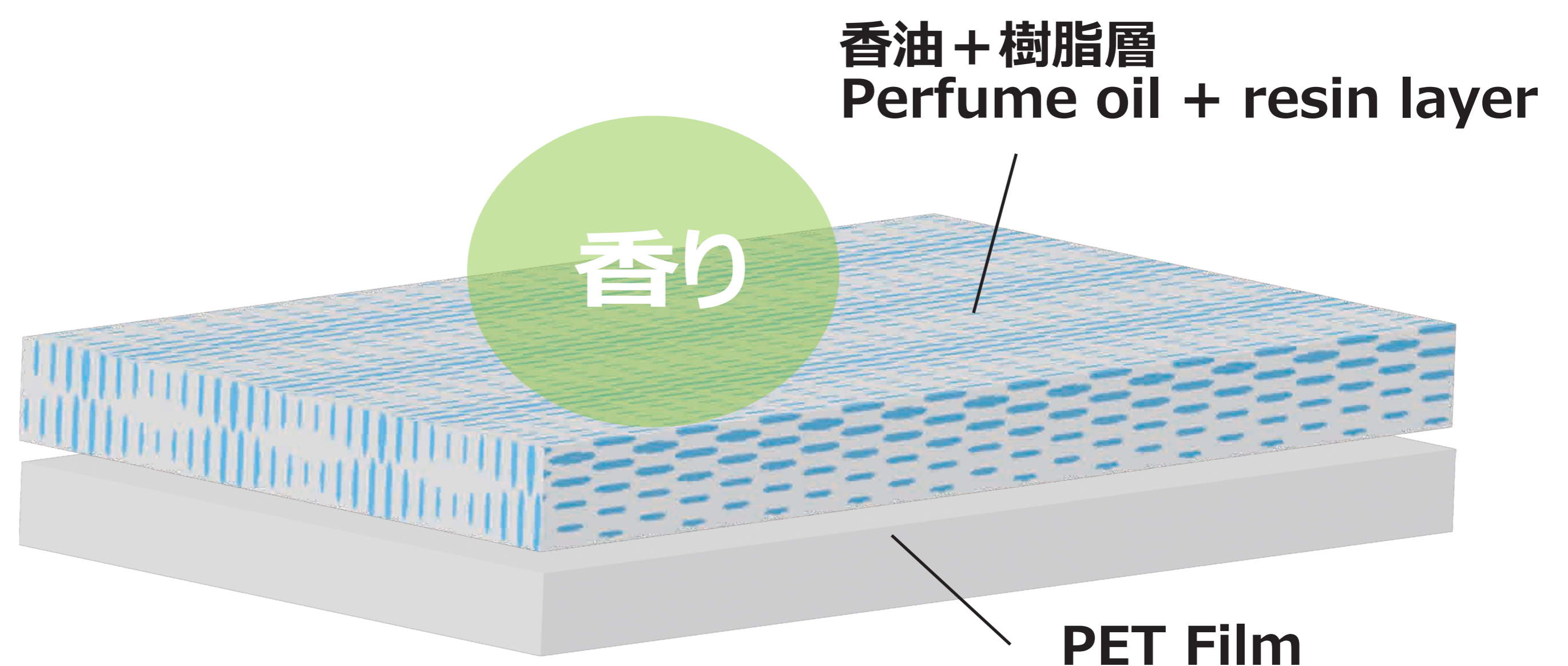
### ◇不織布タイプ° Fablic-type

- ▶ **香りカプセル（粉体）を不織布に付けたシートです**  
It is a sheet with scent capsules (powder) attached to non-woven fabric.
- ▶ **様々な機能粉体を担持させることができます**  
It can carrier various functional powders.



### ◇フィルムタイプ° Film-type

- ▶ **香油を多孔質膜に浸透させたシートです**  
It is a sheet with scent capsules (powder) attached to non-woven fabric.



上記データは一定条件下で求めた測定値であり保証値ではありません。

The above data were obtained from measurements under specific conditions and not guaranteed values.